



LGT SmartBanking

Registering additional authentication devices via app

May 2020

These instructions will guide you step by step through the registration of an additional authentication device for LGT SmartBanking via app on your smartphone or tablet.

1. Getting started

1.1 To register an additional authentication device, please have the following documents and devices ready:

- Your access data with your user ID and password.
- Your activation letter containing the cryptogram that was sent you by post.
- A smartphone or tablet with a camera that has already been registered.

Activation letter



1.2 Install the free LGT SmartBanking app on your new smartphone or tablet. To do so, open the app store on your mobile device and do a search for the LGT SmartBanking app or scan the QR code on the right. Install the app and then open it.

iTunes App Store / Google Play Store



1.3 In the LGT SmartBanking app, click on "Register" in order to launch it in the app.



2. Registering the device

2.1 On the "Registered Devices" page, select the option "Yes" and then enter your user ID and actual password in the respective fields.

Please note: If you want the password to be displayed, click on the "eye" symbol next to the password field.

2.2 Then confirm with "Login".



2.3 You will then be prompted to scan the cryptogram on your new device's screen with a smartphone or tablet that has already been registered for LGT SmartBanking. To do so, open the LGT SmartBanking app on your existing device and click on "Scan". Hold your smartphone or tablet over the new device to scan the cryptogram.

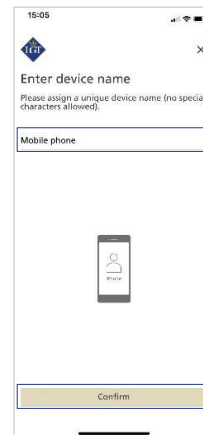
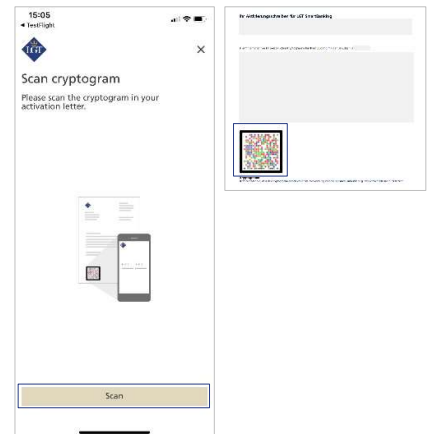
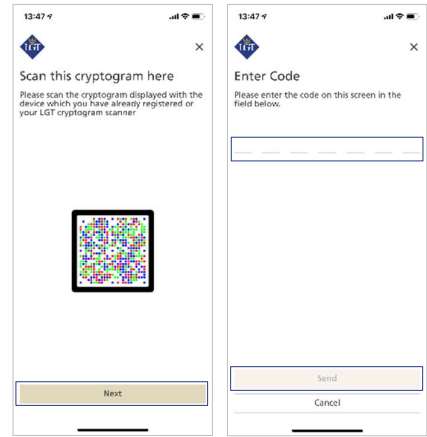
Please note: In order for the scan to work, you must accept the access prompts that appear on your smartphone/tablet.

2.4 After successfully scanning the cryptogram, a code will appear on your existing device. On the new device, click on "Next" and enter the code displayed. Confirm with "Send".

2.5 You will now be prompted to scan the cryptogram contained in the activation letter with your new device.

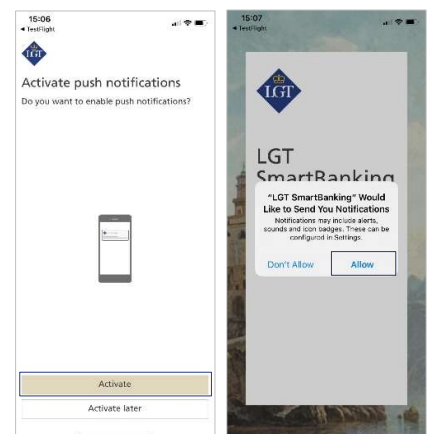
Please note: Scanning will only be successful if you accept the access prompts that appear on your smartphone/tablet, if the letter has been printed in color and if the lighting is good.

2.6 Enter a unique device name for your newly registered smartphone or tablet and click on "Confirm". This is helpful if you wish to use LGT SmartBanking on several mobile devices.



3. Completing your registration

3.1 You will now be requested to activate push notifications on your smartphone or tablet. Please confirm by selecting "Activate" and then "Allow". This will enable you to confirm the login and payment process, respectively, with a corresponding message sent to your mobile device. You can also activate this function at a later point in time.



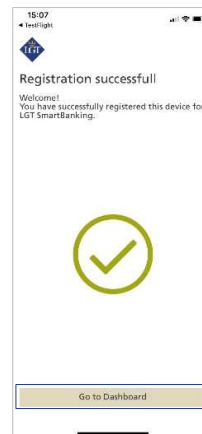
3.2 You can now activate a simplified login process using biometric login options, such as your fingerprint or facial recognition. To do so, click on "Activate". This will enable you to log in to LGT SmartBanking without a password and using only the biometric login option selected. You can also activate this function at a later point in time.



Your registration is now complete. By clicking on "Go to Dashboard", the LGT SmartBanking home page will open.

You can start using LGT SmartBanking immediately via the app on your smartphone or tablet. Alternatively, you can log in to LGT SmartBanking on your computer, laptop or tablet by opening a web browser and entering smartbanking.lgt.com to open the website.

Please keep your activation letter. You will need it to register an additional or a new device, for example if you switch smartphones.



Please contact our LGT SmartBanking Support team should you have any questions.

LGT Online Banking Support
Opening hours: Monday until Friday, from 8 am to 6 pm (MET)
Tel. +423 235 2325